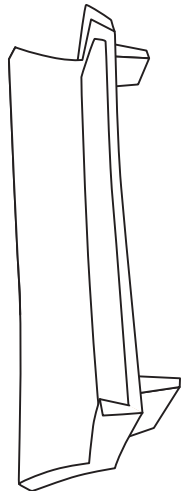
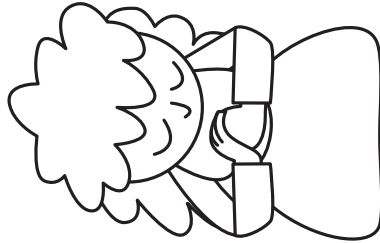
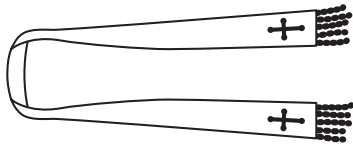
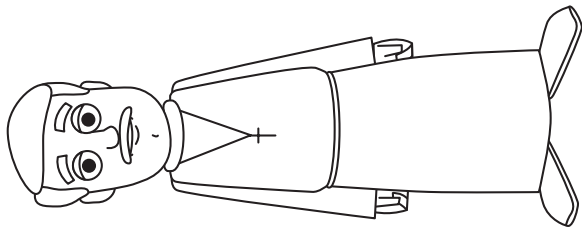


Match the worship things with the things that go on them.



# Epiphany 4

YEAR B • JANUARY 31, 2021

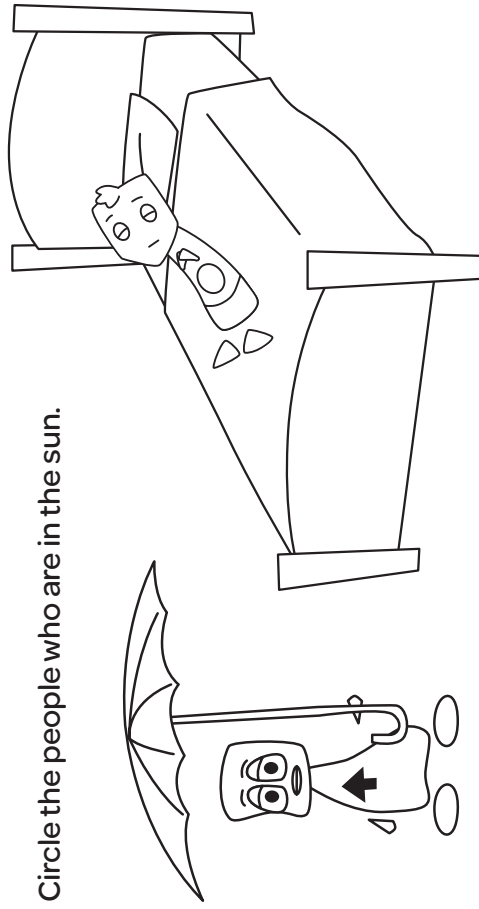


Pre-Reader



Epiphany is the season of LIGHT!  
The sun gives us light.

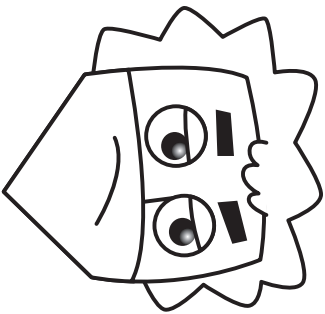
Circle the people who are in the sun.



Fold here

Whirl Year B Winter Director Guide, wearesparkhouse.org, © 2020 Sparkhouse. All rights reserved.  
May be reproduced for local use only provided each copy carries this notice.

Fold here

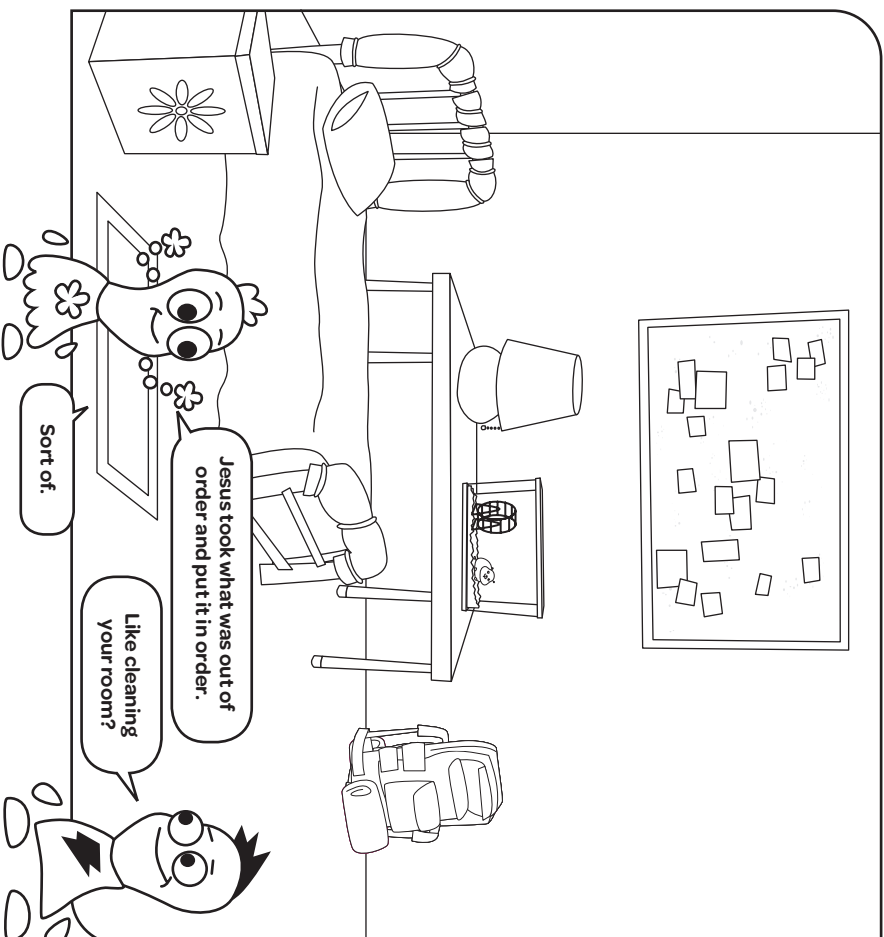
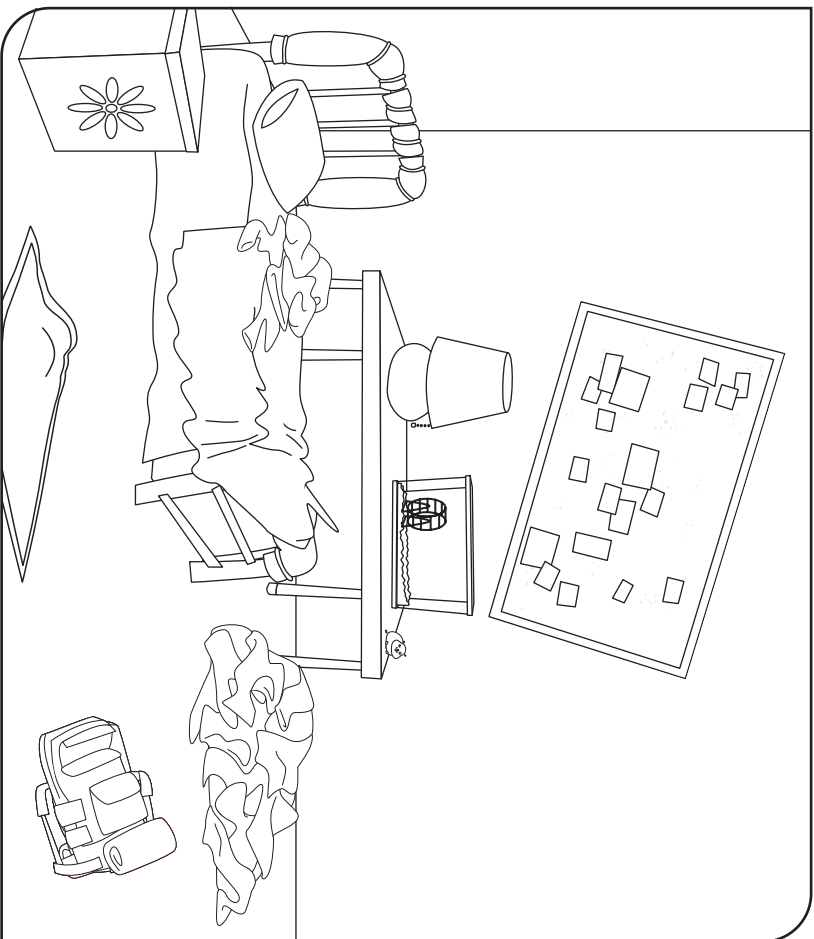


# Jesus cleaned the man with an unclean spirit.

Circle the things that need to be changed to make the unclean room clean again.

Unclean

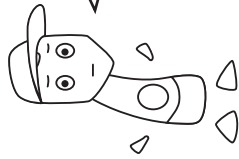
Clean



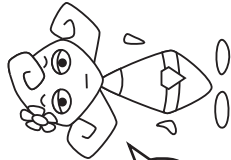
Today our church family prays for...

# Who does what in your church?

Act like a detective to find the answers to the questions below:



So if Epiphany is the season of light, who turns on the lights in your church?



And who lights the candles?

Who counts the money?

Who cleans the bathrooms?

Who answers the phones?

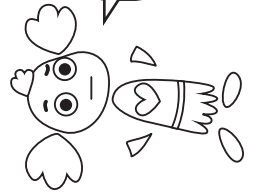
Who cuts the lawn?

Who runs the coffee hour?

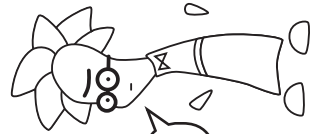
Who decorates the worship space?

Who visits the elderly?

Who folds the bulletins?



How old do you have to be to do these things?



Where does the electricity for your church come from?

Fold here

Whirl Year B Winter Director Guide, [wearesparkhouse.org](http://wearesparkhouse.org), © 2020 Sparkhouse. All rights reserved. May be reproduced for local use only provided each copy carries this notice.

Fold here

# Epiphany 4

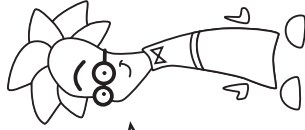
## YEAR B • JANUARY 31, 2021



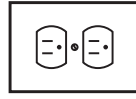
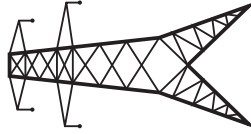
Reader



Name some sources of light.



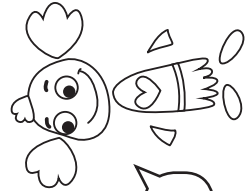
The light we see with comes from different sources. But the source of Jesus' power to heal and help comes from one place.



Name Jesus' power source.



That's the source of our power too! Always a good answer!



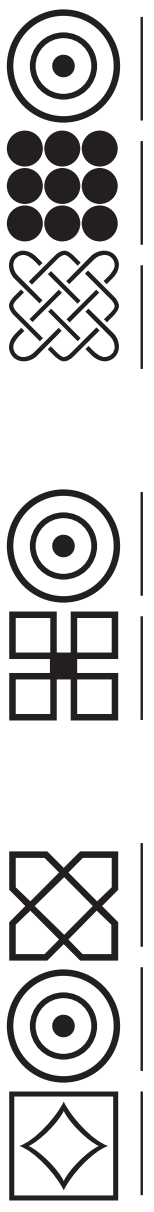
Even when it's dark!

**The light of Christ is always with us!**

**The man with the unclean spirit says:**

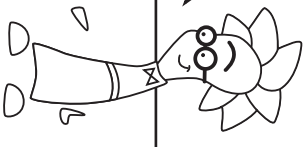
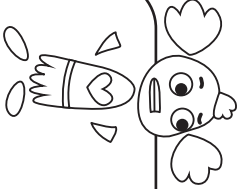
**"What have you to do with us, Jesus of Nazareth? Have you come to destroy us?" Mark 1:24**

Figure out what else the man with the unclean spirit says to Jesus using the key below



I don't get it.

Each symbol is a letter. Where you see the symbol, put that letter.



- A
- D
- E
- F
- G
- H
- I
- K
- L
- N
- O
- R
- T
- U
- W
- Y

Today our church family prays for...